

# Diversity, Equity & Inclusion Benchmarking Survey

**Industrial Products & Services**  
Data Sheet



1,499+ Corporate Respondents

5 Regions

45+ Countries



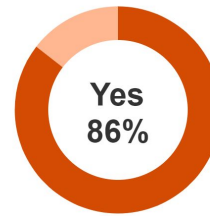
# Industrial Products and Services Data Sheet

Many Industrial Products & Services (IPS) organisations have publicly declared their commitment to Diversity, Equity & Inclusion (DE&I) for some time now, but how have they translated strategy into execution and what impact is it having on the employee experience? PwC's DE&I Benchmarking Survey finds out.

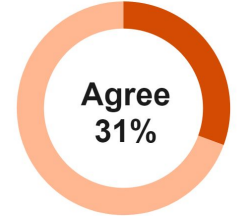
## Organisations are making strides around diversity

IPS organisations are making strides helping translate DE&I strategy into action. DE&I is a stated value or priority area for 86% of organisations, 31% of respondents still feel diversity is a barrier to employee progression.

DE&I is a stated value or priority



Diversity is a barrier to progression at my organisation



## However, few DE&I programmes reach full maturity

Only 7% of surveyed IPS organisations' DE&I programmes reach the highest level of maturity when assessed against the four dimensions of PwC's DE&I maturity model.



1. Understanding the Facts of Today (UFT): Initiating a continuous data-driven process for understanding the facts of what's happening in the organisation today



2. Building an Inspirational Strategy (BIS): Creating a business-focused vision and strategy for DE&I that reflects the reality of today and the real potential of tomorrow

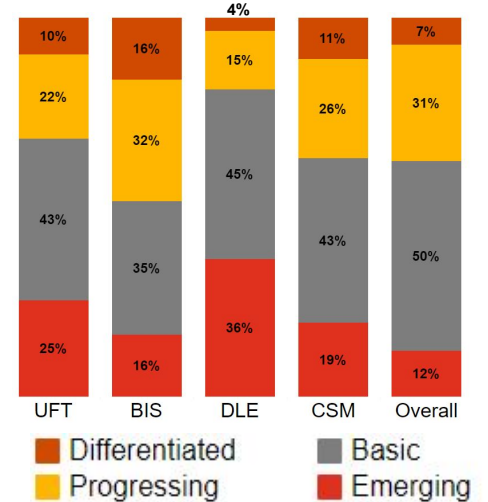


3. Developing Leadership Engagement (DLE): Engaging leadership around an inspirational DE&I strategy by articulating the business case and establishing supportive governance



4. Creating Sustainable Movement (CSM): Executing the DE&I strategy across all elements of the business

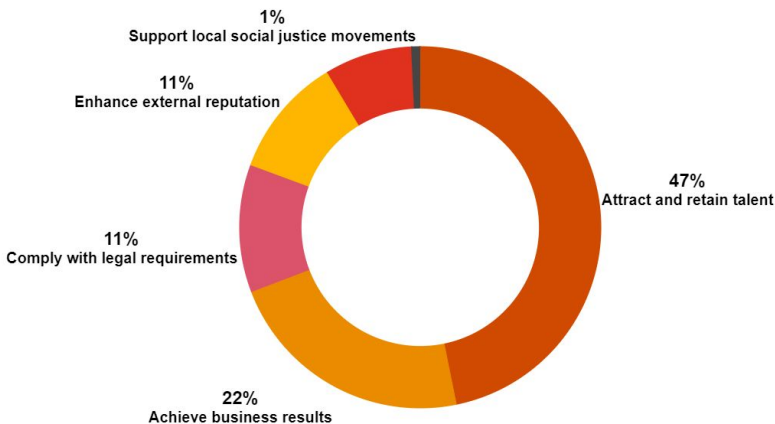
## Degree of programme maturity<sup>1</sup>



## DE&I programme goals

Nearly half of IPS organisations surveyed (47%) view their DE&I programme primarily as a way to attract and retain talent, but far fewer are connecting DE&I directly to achieving business results, or enhancing the external reputation.

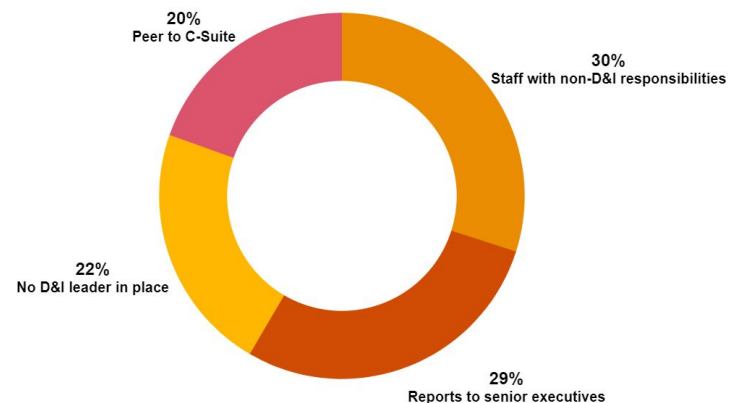
## The primary objective of DE&I is to...



## Programme oversight

While DE&I survey data indicates that having a DE&I leader that is a peer to the C-Suite can be a differentiator between organisations where diversity is not considered a barrier to progression and those where it is, only 20% of organisations surveyed have adopted this programme structure.

## The DE&I programme leader is...



Source: PwC: Global DE&I Data, July 2022 based on ~6,000 responses across 52+ countries and 26+ industries

<sup>1</sup>Percentages do not add up to 100% as some respondents opted out of questions which did not allow for them to be fully assessed against certain dimensions of the maturity model.



## Accountability for DE&I results

Tasking leaders with specific DE&I goals is key to driving results. Despite this, just under a third of IPS organisations surveyed have adopted this practice (32%) and fewer measure progress towards the achievement of these goals.

### How does your organisation drive accountability for DE&I results?

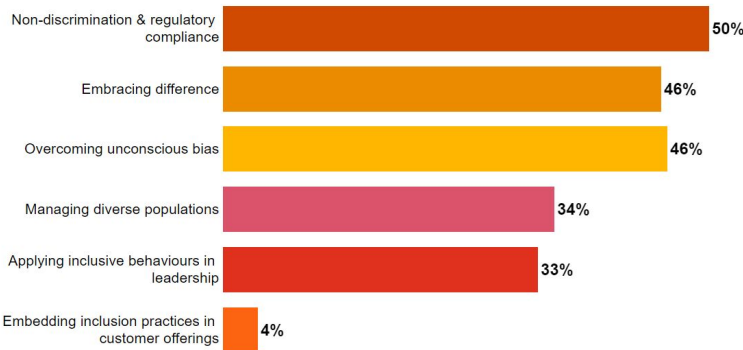
Leaders are tasked with specific DE&I goals	32%
Leaders' progress toward meeting their DE&I goals is measured	24%
DE&I goals influence performance evaluation and compensation outcomes for leaders	17%
DE&I goals influence performance evaluation and compensation outcomes for all employees	17%
None of the above	26%



## Training programmes in place

Half of IPS organisations surveyed (50%) provide training on non-discrimination and regulatory compliance and roughly the same proportion are also expanding training to focus on overcoming unconscious bias and embracing differences among employees in the workplace.

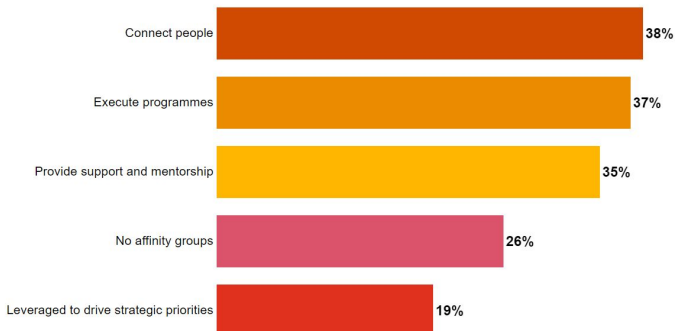
### Training programmes focus on...



## Role of affinity networks/ resource groups

While the majority (74%) of IPS organisations surveyed have affinity groups, they are mostly used to foster networks and execute programmes, rather than to inform decision-making and drive business priorities.

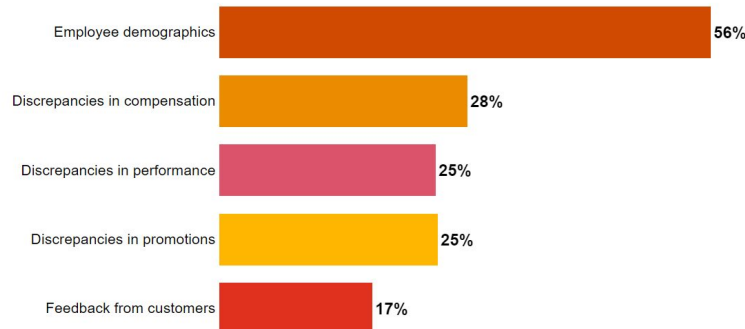
### Affinity groups at my organisation...



## Leveraging data

Driving sustainable change requires effective monitoring efforts. Most organisations track employee demographics (e.g., gender), but significantly fewer measure discrepancies in compensation, performance, or promotions based on these attributes.

### My organisation gathers & analyses the following types of data...



## Take the DE&I Benchmarking Survey

Analyze the maturity of your organisation's DE&I programme, and see how your organisation compares to others in your region and industry.



[pwcresearch.com/uc/DEISurvey/](https://pwcresearch.com/uc/DEISurvey/)



---

### Additional reading

[PwC's Global Hopes and Fears Survey 2022](#): Explore key findings on approaching sensitive political and social discussions from PwC's Workforce Hopes and Fears 2022 survey of 52,000+ workers across 44 countries and territories worldwide.

[PwC's 25th Annual Global CEO Survey](#): Hear from 4,446 CEOs across 89 countries and territories on reimagining the outcomes that matter, including thinking around race and ethnicity representation rates in their company's long-term corporate strategy.

---

### For a deeper discussion, contact:



**Bhushan Sethi**  
Joint Global Leader, People & Organisation,  
PwC United States  
Tel: +1 917 863 9369  
[bhushan.sethi@pwc.com](mailto:bhushan.sethi@pwc.com)



**Sabah Cambrelen**  
Partner, DE&I Consulting Leader  
PwC United States  
Tel: +1 720 391 2681  
[sabah.cambrelen@pwc.com](mailto:sabah.cambrelen@pwc.com)

Source: PwC: Global DE&I Data, July 2022 based on ~6,000 responses across 52+ countries and 26+ industries